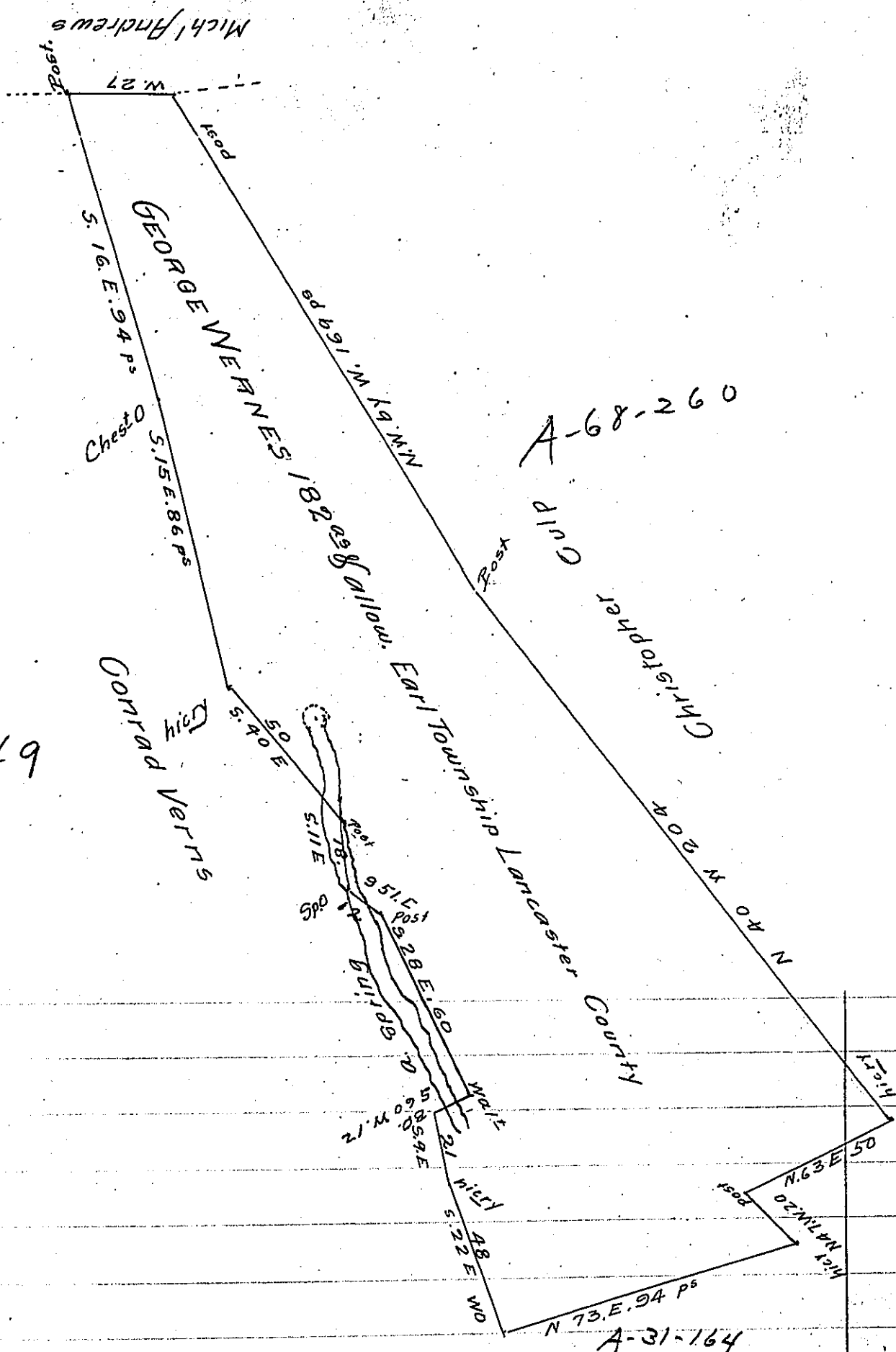


A-59-244



249

A Draught of George Wernes land situate in Earle Township in the County of Lancaster containing One hundred and Eighty Two acres and the allowance of Six acres p Cent for Roads and Highways. By Virtue of the Honorable the Proprietors Warrant dated the 26<sup>th</sup> day of May 1752. Survey'd the 24<sup>th</sup> day of May 1752

By Tho. Cookson D.S.

To Nicholas Scull Esq<sup>r</sup>  
Surveyor General

IN TESTIMONY that the above is a copy of the original remaining on file in the Department of Internal Affairs of Pennsylvania, made conformably to an Act of Assembly approved the 16th day of February 1833, I have hereunto set my hand and caused the Seal of said Department to be affixed at Harrisburg, this first day of May 1907

*Luca P. Brown*  
Secretary of Internal Affairs.